

Recommended

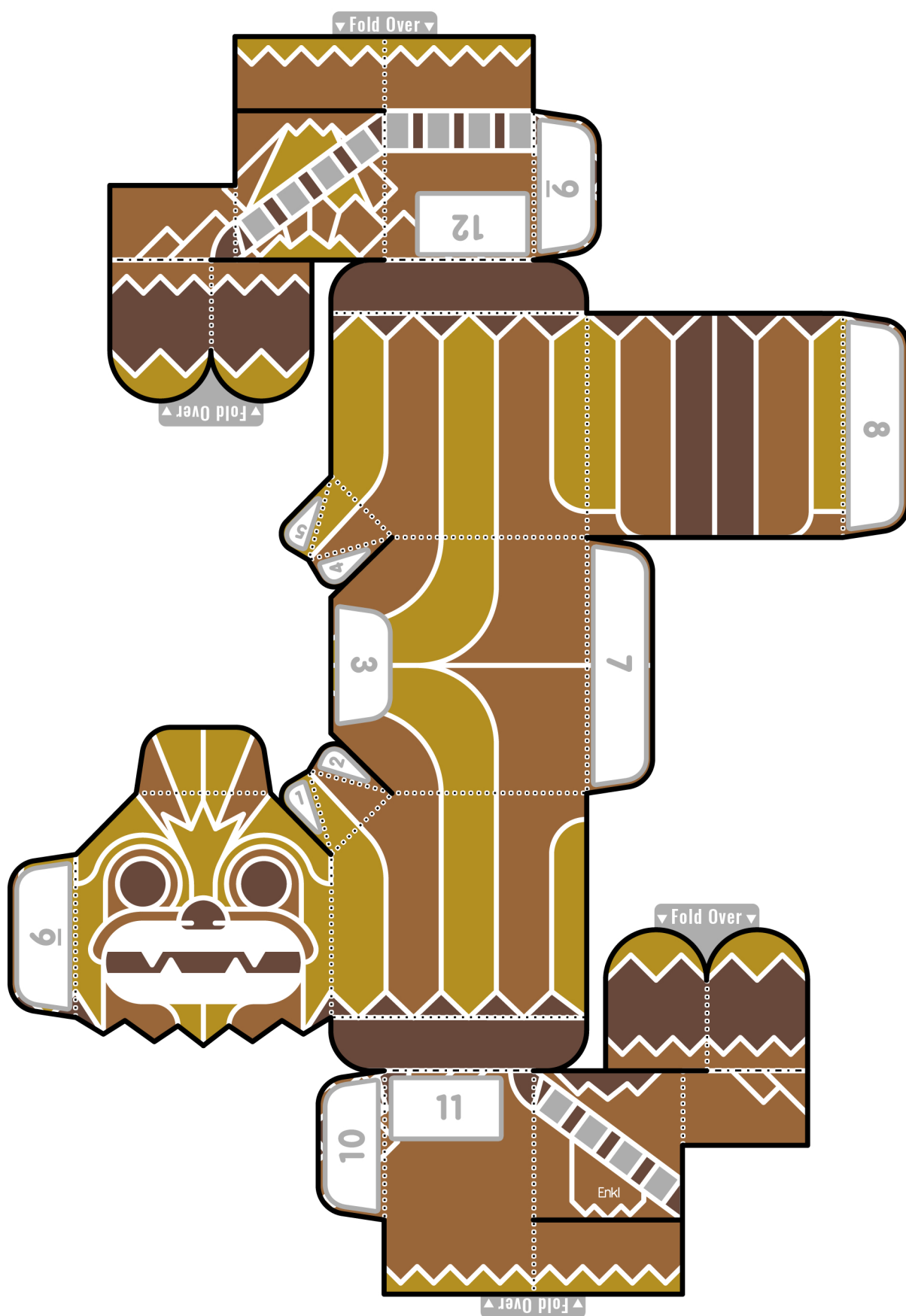
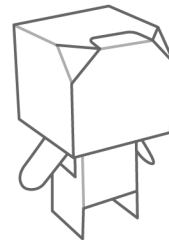
Print onto 250gsm or heavier cardstock for best results.
 Score fold lines first using a craft knife or empty ball point pen.
 Check for instructions before building.

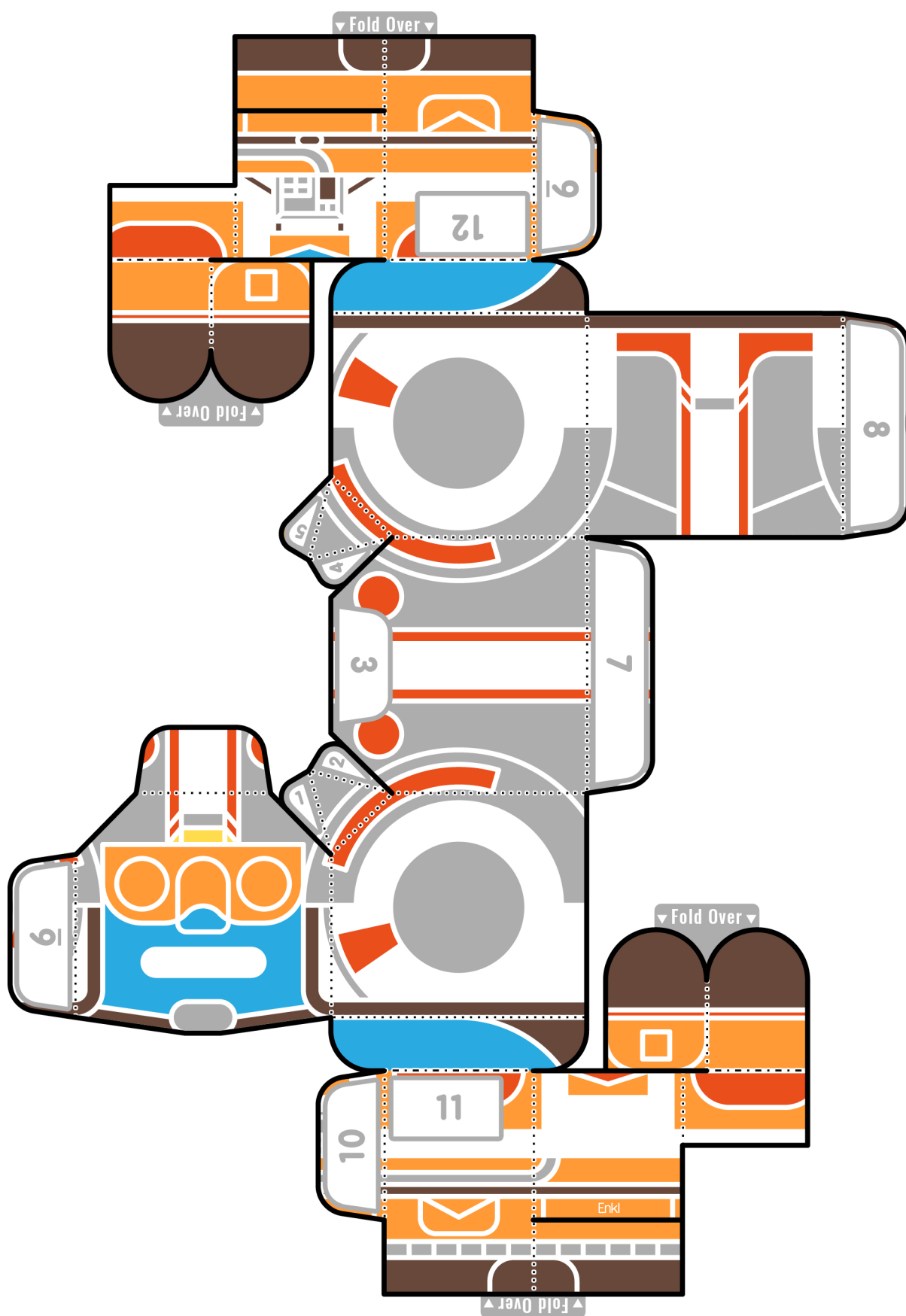
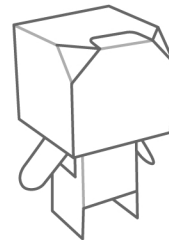
- 1) Cut
- 2) Hill Fold
- 3) Valley Fold
- 4) Glue

Valley Fold (Fold up)



Hill Fold (Fold down)





Recommended

Print onto 250gsm or heavier cardstock for best results.
Score fold lines first using a craft knife or empty ball point pen.
Check for instructions before building.

- 1) Cut
- 2) Hill Fold
- 3) Valley Fold
- 4) Glue

Valley Fold (Fold up)

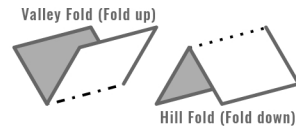


Hill Fold (Fold down)

Basic Instructions

- Printing** You can print all ENKL products on conventional printer paper but end results may be less stable than those printed onto card. We recommend printing these ENKL products on 250gsm cardstock for best results. Printing onto thicker card may make the models more difficult to build.
- Cutting** Cut along the solid black outlines. You can use either scissors or a craft knife to cut out the model. ENKL recommends using scissors for curved areas and a craft knife for more intricate outlines. Designs can mostly be built without a craft knife unless requiring one is explicitly mentioned.
- Folding** Fold along the dotted lines, following the key below to fold up, or down. For best results we recommend scoring along the lines before folding by lightly pressing on them with either a craft knife or empty ballpoint pen.

- 1) Cut _____
- 2) Valley Fold - - - - -
- 3) Hill Fold



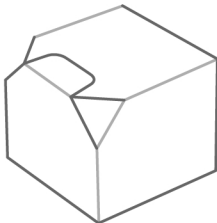
- Gluing** Glue the tabs in the order that they're numbered. Every tab consists of white space with a number or letter inside like the example below. For best results use a non-liquid glue that dries quickly and apply it evenly to the entire tab.

Glue **2**

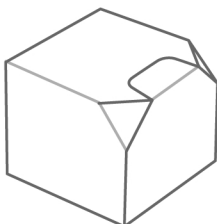
- Parts** For models with numerous parts you will find labels on the page to help with the construction. Each part has a label on the page marked "Part X" as well as a smaller label on the parts themselves. When parts need to be glued together the tabs connecting the two parts will be labelled with the corresponding part letter.

Desk Buddy Instructions

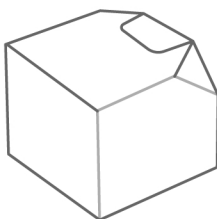
- 1) Cut out the model's parts using the solid black outline.
- 2) Following the key at the bottom of the page, fold along the dotted lines.
- 3) Fold over the arms and legs of the model marked "fold over".
- 4) Glue down tabs 1-3 (in that order) to create the first corner of the head as shown in the diagram.



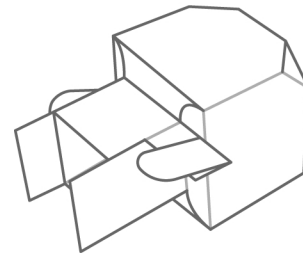
- 5) Fold the face of the model around and glue down tabs 4-6 (in that order) to make the second corner of the head.



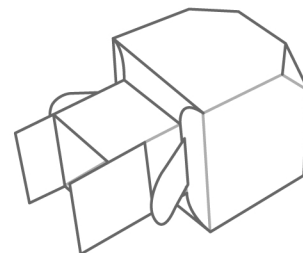
- 6) Glue down tabs 7 and 8 to close the back of the head as shown.



- 7) Glue the body together using tabs 9 and 10 as shown.



- 8) Glue down the sides of the arms using tabs 11 and 12 as shown.



- 9) Glue on any accessories using any tabs marked 13 or higher.

