

Deadly Animals and Creatures

Humans are by far the deadliest animal on the planet.



Culex mosquito



Echis snake



Tsetse fly

Photos courtesy of Omid.Mozaffari and Oregon State University (@flickr.com) - granted under creative commons licence - attribution

Which are the deadliest to humans?

Mosquitoes cause the most human deaths every year. They carry disease-causing viruses and parasites.

Not all snakes are dangerous but more than 450 species are venomous.

Dog bites cause over 90% of rabies infections in humans.

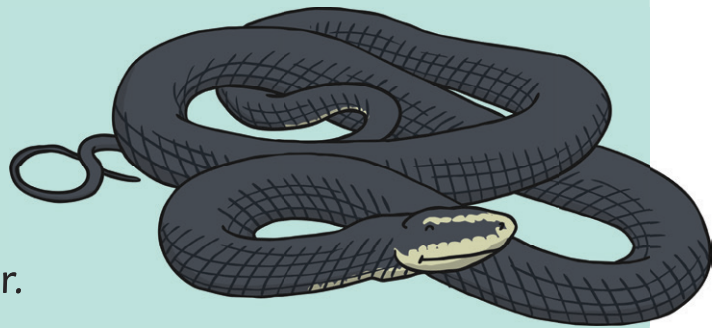
Tsetse flies spread the African sleeping sickness.

Big facts!

According to Bill Gates' World's Deadliest Animals list, published in 2014, these are the deadliest animals, ranked by number of human deaths they cause each year:

- | | |
|--|---|
| 1. Mosquitoes cause 725,000 deaths a year. | 4. Dogs (rabies) cause 25,000 deaths a year. |
| 2. Humans cause 475,000 deaths a year. | 5. Tsetse flies (sleeping sickness) cause 10,000 deaths a year. |
| 3. Snakes cause 50,000 deaths a year. | |

6. Assassin bugs (Chagas disease) cause 10,000 deaths a year.
7. Freshwater snails cause 10,000 deaths a year.
8. Ascaris roundworms cause 2,500 deaths a year.
9. Tapeworms cause 2000 deaths a year.
10. Crocodiles cause 1000 deaths a year.
11. Hippopotamuses cause 500 deaths a year.
12. Lions cause 100 deaths a year.
13. Elephants cause 100 deaths a year.
14. Wolves cause 10 deaths a year.
15. Sharks cause 10 deaths a year.



Where do these animals live?

Mosquitoes and snakes are found in every continent apart from Antarctica.

Tsetse flies and the most of the harmful mosquitoes live in Africa.

Deadly snakes are most common in Asia.

Most rabies-related human deaths happen in Asia and Africa.

Deadly Animals and Creatures Questions

Answer the questions below in full sentences.

1. Which insect causes the most deaths?

2. What do mosquitoes carry?

3. How many species of snakes are venomous?

4. What spreads the African sleeping sickness?

5. From the list, how many deaths a year do sharks cause?

6. Which other animal causes the same number of deaths each year as sharks do?

7. How many deaths do tapeworms cause?

8. Mosquitoes and snakes are found in every continent apart from which one?

Deadly Animals and Creatures **Answers**

1. Which insect causes the most deaths?
Mosquitoes cause the most deaths.
2. What do mosquitoes carry?
They carry disease-causing viruses and parasites.
3. How many species of snakes are venomous?
450 species are venomous.
4. What spreads the African sleeping sickness?
The tsetse fly spread it.
5. From the list, how many deaths a year do sharks cause?
Sharks cause 10 deaths a year.
6. Which other animal causes the same number of deaths each year as sharks do?
Wolves also cause 10 deaths a year.
7. How many deaths do tapeworms cause?
Tapeworms cause 2000 deaths a year.
8. Mosquitoes and snakes are found in every continent apart from which one?
Every one apart from Antarctica.

Deadly Animals and Creatures

Humans are by far the deadliest animal on the planet. Humans are aggressive towards each other and to other animals, use deadly weapons and have harmed our planet.



Culex mosquito



Echis snake



Tsetse fly

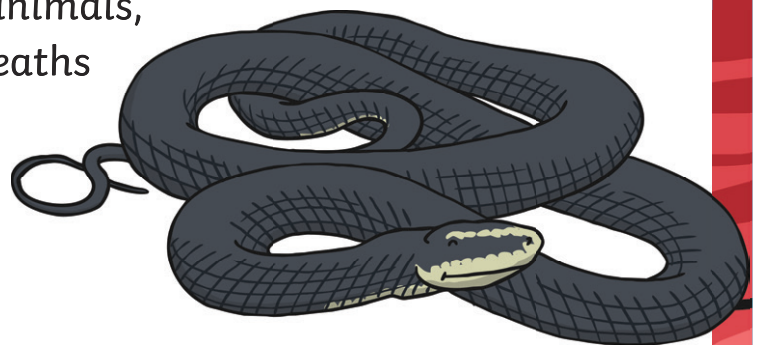
Photos courtesy of Omid.Mozaffari and Oregon State University (@flickr.com) - granted under creative commons licence - attribution

Which are the deadliest to humans?

Mosquitoes cause the most human deaths every year. They are the smallest and the deadliest creature on earth. Mosquitoes carry disease-causing viruses and parasites, for example malaria, yellow fever and dengue fever. Not all snakes are dangerous but more than 450 species are venomous. Snakebites are often not reported, but it is estimated that between 420,000 and 1.8 million snakebites happen each year. Dog bites cause over 90% of rabies infections in humans. Tsetse flies are also called tik-tik flies and spread the African sleeping sickness.

Big facts!

According to Bill Gates' World's Deadliest Animals list, published in 2014, these are the deadliest animals, ranked by number of human deaths they cause each year:



1. Mosquitoes cause 725,000 deaths a year.
2. Humans cause 475,000 deaths a year.
3. Snakes cause 50,000 deaths a year.
4. Dogs (rabies) cause 25,000 deaths a year.
5. Tsetse flies (sleeping sickness) cause 10,000 deaths a year.
6. Assassin bugs (Chagas disease) cause 10,000 deaths a year.
7. Freshwater snails cause 10,000 deaths a year.
8. Ascaris roundworms cause 2,500 deaths a year.
9. Tapeworms cause 2000 deaths a year.
10. Crocodiles cause 1000 deaths a year.
11. Hippopotamuses cause 500 deaths a year.
12. Lions cause 100 deaths a year.
13. Elephants cause 100 deaths a year.
14. Wolves cause 10 deaths a year.
15. Sharks cause 10 deaths a year.

Where do these animals live?

Mosquitoes and snakes are found in every continent apart from Antarctica. The biggest number of harmful mosquitoes are in Africa. Deadly snakes are most common in Asia. Most rabies-related human deaths happen in Asia and Africa. The UK was declared rabies-free in 1922. Tsetse flies live in Africa.

Deadly Animals and Creatures Questions

Answer the questions below in full sentences.

1. What is the deadliest animal on the planet?

2. Which insect is the deadliest?

3. Which diseases do mosquitoes spread?

4. Are all snake bites reported?

5. How many snakebites happen each year?

6. From the list, how many deaths a year do snakes cause?

7. Which animals cause 100 deaths per year?

8. Where are mosquitoes and snakes found?

9. Where do tsetse flies live?

Deadly Animals and Creatures **Answers**

1. What is the deadliest animal on the planet?

Humans are by far the deadliest animal on the planet.

2. Which insect is the deadliest?

Mosquitoes cause the most human deaths each year.

3. Which diseases do mosquitoes spread?

Mosquitoes carry disease-causing viruses and parasites, for example malaria, yellow fever and dengue fever.

4. Are all snakebites reported?

No, snakebites are often not reported.

5. How many snakebites happen each year?

It is estimated that between 420,000 and 1.8 million snakebites happen each year.

6. From the list, how many deaths a year do snakes cause?

Snakes cause 50,000 deaths a year.

7. Which animals cause 100 deaths per year?

Lions and elephants cause 100 deaths a year.

8. Where are mosquitoes and snakes found?

Mosquitoes and snakes are found in every continent apart from Antarctica.

9. Where do tsetse flies live?

Tsetse flies live in Africa.

Deadly Animals and Creatures

Humans are by far the deadliest animal on the planet. Humans have shown aggression towards each other and to other animals, used deadly weapons and have proved to be very destructive to our planet and the animals and plants that inhabit it. Many animals even actively avoid us.



Culex Mosquito



Echis Snake



Tsetse Fly

Photos courtesy of Omid.Mozaffari and Oregon State University (@flickr.com) - granted under creative commons licence - attribution

Which are the deadliest to humans?

Mosquitoes cause the most human deaths each year, making them the smallest but also the deadliest creature on earth. Mosquitoes carry disease-causing viruses and parasites, for example malaria, yellow fever and dengue fever, to an estimated 700 million people every year! Not all snakes are dangerous but more than 450 species are venomous. The Echis causes the most snakebite deaths. Snakebites are often not reported, but it is estimated that between 420,000 and 1.8 million snakebites happen each year. Dog bites cause over 90% of rabies infections in humans. Tsetse flies are also called tik-tik flies and spread the African sleeping sickness.

Big facts!

According to Bill Gates' World's Deadliest Animals list, published in 2014, these are the deadliest animals, ranked by number of human deaths they cause each year:

1. Mosquitoes cause 725,000 deaths a year.
2. Humans cause 475,000 deaths a year.
3. Snakes cause 50,000 deaths a year.
4. Dogs (rabies) cause 25,000 deaths a year.
5. Tsetse flies (sleeping sickness) cause 10,000 deaths a year.
6. Assassin bugs (Chagas disease) cause 10,000 deaths a year.
7. Freshwater snails cause 10,000 deaths a year.
8. Ascaris roundworms cause 2,500 deaths a year.
9. Tapeworms cause 2000 deaths a year.
10. Crocodiles cause 1000 deaths a year.
11. Hippopotamuses cause 500 deaths a year.
12. Lions cause 100 deaths a year.
13. Elephants cause 100 deaths a year.
14. Wolves cause 10 deaths a year.
15. Sharks cause 10 deaths a year.

Where do these animals live?

Mosquitoes and snakes are found in every continent apart from Antarctica. Most malaria-related deaths caused by mosquitoes happen in Africa. Snakebites and deaths caused by snakes are most common in Asia. Dog attacks in Europe are very rare. Most rabies-related human deaths happen in Asia and Africa. The UK was declared rabies-free in 1922. Tsetse flies live in Africa.

Deadly Animals and Creatures Questions

Answer the questions below in full sentences.

1. Why are humans thought of as being the deadliest animal?

2. How do mosquitoes harm us?

3. How many species of snake are venomous?

4. How many snakebites happen each year?

5. What animals out of the top 15 list cause the fewest human deaths every year?

6. Which animals cause 10,000 deaths a year?

7. What do tsetse flies spread?

8. In which continents in the world do you find the most cases of rabies?

9. Where do the highest number of snakebites and deaths by snakes happen?

10. Are you afraid of any animals, what are they and why?

Deadly Animals and Creatures **Answers**

1. Why are humans thought of as being the deadliest animal?

Humans have shown aggression towards each other and to other animals, used deadly weapons and have proved to be very destructive to our planet and the animals and plants that inhabit it.

2. How do mosquitoes harm us?

Mosquitoes carry disease-causing viruses and parasites, for example malaria, yellow fever and dengue fever, to an estimated 700 million people every year!

3. How many species of snake are venomous?

More than 450 species of snake are venomous.

4. How many snakebites happen each year?

It is estimated that between 420,000 and 1.8 million snakebites happen each year.

5. Which animals out of the top 15 list cause the least human deaths each year?

Wolves and sharks cause the least deaths a year, from the list.

6. Which animals cause 10,000 deaths a year?

Tsetse flies, assassin bugs and freshwater snails all cause 10,000 deaths a year, from the list.

7. What do tsetse flies spread?

They spread the African sleeping sickness.

8. In which continents of the world do you find the most cases of rabies?

Most rabies-related human deaths happen in Asia and Africa.

9. Where do the highest number of snakebites and deaths by snakes happen?

Snakebites and deaths caused by snakes are most common in Asia.

10. Are you afraid of any animals, what are they and why?

(Answers will vary) E.g. I am scared of sharks because they have big teeth.